

Welcome to Networkshop 36

Derek Law

Head, Information Resources Directorate

University of Strathclyde



THE
UNIVERSITY OF
STRATHCLYDE
IN GLASGOW

The University of Strathclyde, founded in 1796 as “a place of useful learning”



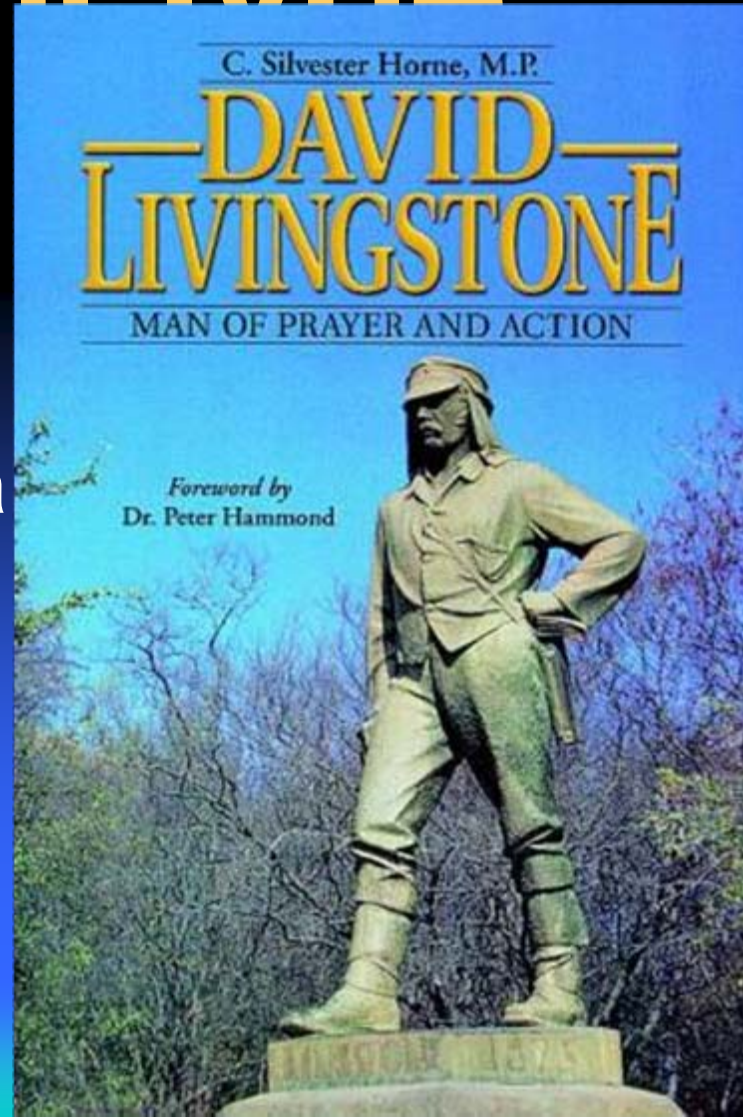
University of Strathclyde

- **18th Century**
- **James Watt**
 - **Steam Engine**
 - **Industrial Revolution**
 - **Environmental Pollution**
 - **Global Warming**
 - **Melting Ice Caps**



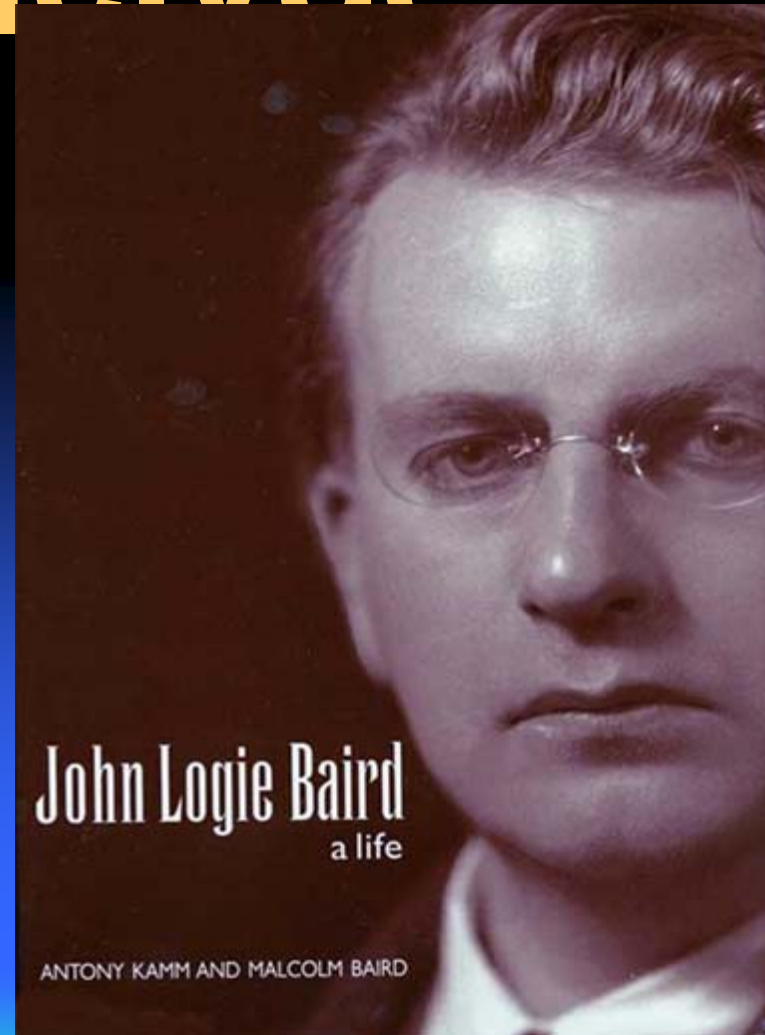
University of Strathclyde

- James Watt
- 19th Century
- David Livingstone
 - Exploration of Africa
 - British Empire
 - Political chaos from Iraq to the Malvinas



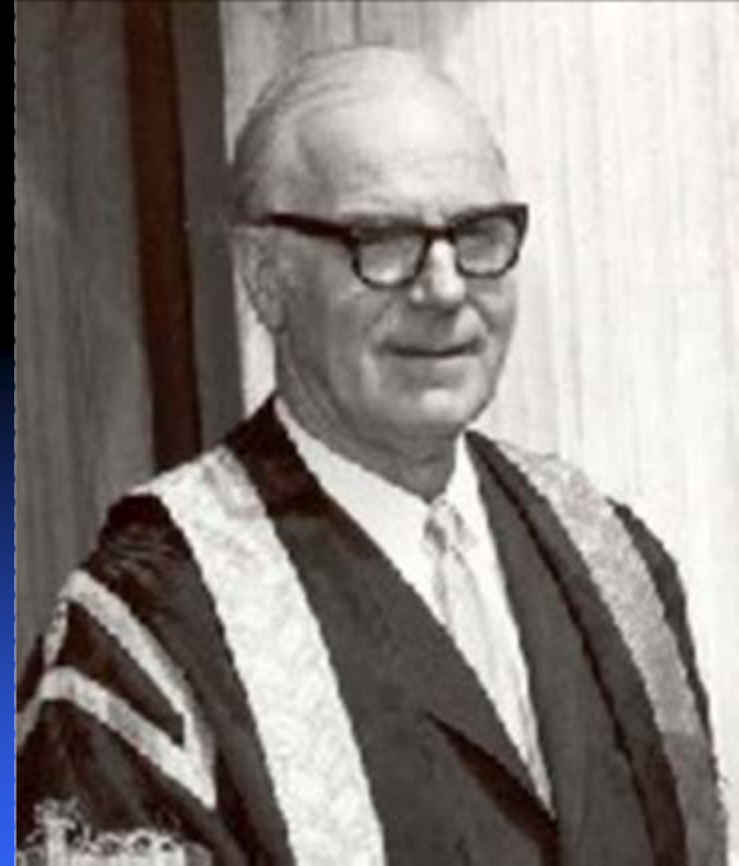
University of Strathclyde

- James Watt
- David Livingstone
- 20th Century:
Part 1
 - John Logie Baird
 - television
 - from Big Brother to Jerry Springer



University of Strathclyde

- James Watt
- David Livingstone
- John Logie Baird
- 20th Century – Part 2
- Redesignated a University
- Sir Samuel Curran
 - Manhattan Project
 - Atomic Bomb
 - Hiroshima
 - Cold War
 - Three Mile Island



University of Strathclyde

- James Watt
- David Livingstone
- John Logie Baird
- Sir Samuel Curran
- 21st Century
 - Arthur Van Hoff
 - Javascript
 - Pop up windows



Current Service Provision

- **Customer Interface (Support Centre)**
 - **25K Students, 3K Staff**
 - **Fault Support, Advice & Guidance, Retail, Consumables**
 - **Over 60K incidents p.a., 70% of recorded calls resolved same day**
- **Resilient High Bandwidth Network and associated networked Services**
 - **40K registered users**
 - **WEB, Email, Authentication, Central File store, Remote Access, Access to national Networks (ClydeNet / SuperJanet / Research Grid), Videoconferencing, Security**
 - **9K Concurrent Connections, 100K messages/Day, All HEI's in Scotland UseNet News Service (Feed & Reader), Multi Gigabit backbone.**
- **Teaching Support (Teaching Rooms – bookable & non-bookable)**
 - **40K Registered Users**
 - **Provision / Support & maintain Central Lab Hardware & Software in support of Undergraduate teaching**
 - **1500 Seats across Campuses, 250 Academic packages supported, unified printing system**



Current Service Provision

Corporate Systems Support & Enhancement

- **1.8K Staff & 18K Student Users**
- **Support, maintenance and Enhancement of Finance, Personnel, payroll, Student Records, Student Admissions, Estates Job Costing/ Stock Control, Residence & Catering Student Accommodation, FIS, HRIS, Pegasus.**
- **During Exam periods 4k registered logins in Pegasus within 4Hrs, Over 1 Million individual logins in just over a year. 100% of UG Students using and over 50% of staff**
- **New Project Initiatives**
 - **Strathclyde Laptop Initiative (PGDE Primary, Law)**
 - **New Developments in HR/Payroll, Pegasus/Student records, VLE Integration, Full Economic costing, Document Imaging, Room Booking, University Web Site Dynamic Content**
 - **Multiple Gigabit Backbone & Edge networking replacement, Wireless expansion**
 - **Rollout Staff/Student Web Based E-mail and Central Student File Store**
 - **New Teaching Cluster Support & Development**
 - **Strathclyde Standard Desktop**



Lean, Mean and Green:

Enhancing the University Research Machine



Expect the Unexpected



Music

Fixed Place

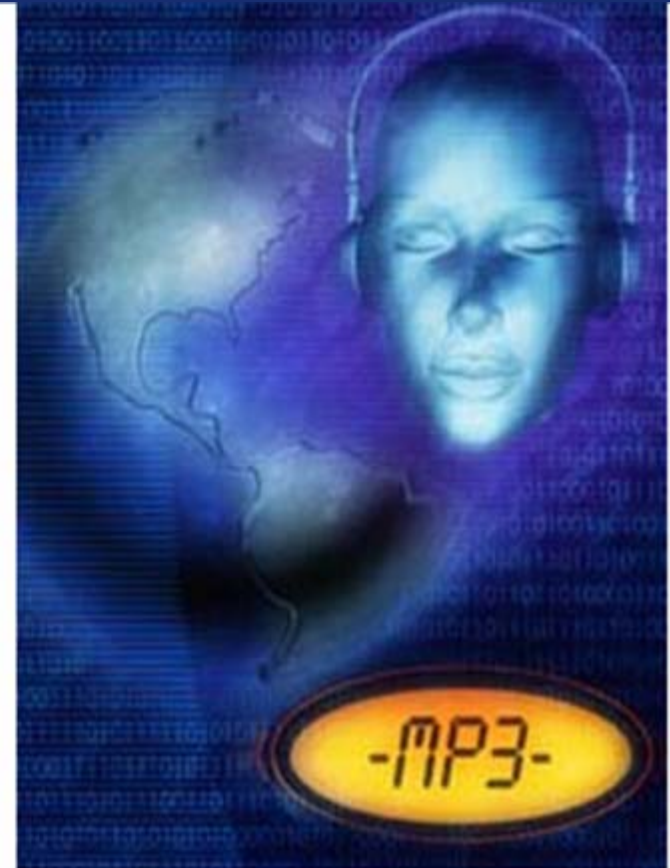


RCA VICTOR

Mobility



On Demand



Education Today

Fixed Place



Mobility



On Demand





Google



UNIVERSITY OF
STRATHCLYDE
IN GLASGOW



Lifelong Learning



THE
UNIVERSITY OF
STRATHCLYDE
IN GLASGOW

Lean Service:
Cost-conscious and
cost-effective



- **Better demonstration of VFM**
 - Not always as well articulated as it could be
- **Better branding**
 - Welcome to JANET FATMAN!
- **Clear articulation of general relevance**
 - So what IS Grid computing for in humanities?



Investing in new technology



THE
UNIVERSITY OF
STRATHCLYDE
IN GLASGOW

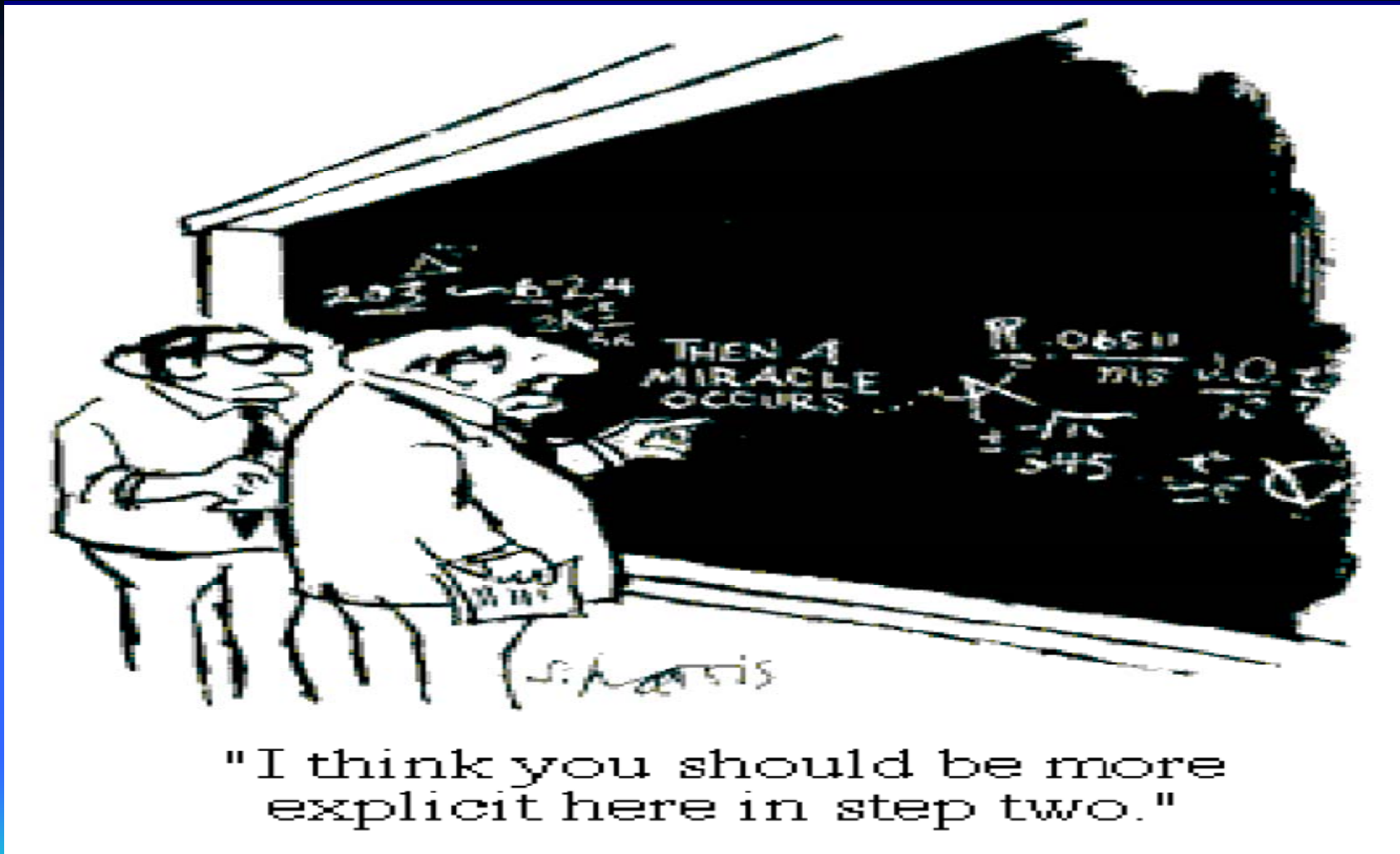
Enabling Anytime,
Anywhere Access:
Mobility with
Security



- **Roaming**
- **Work from home**
- **Overseas students in partner institutions**
- **Convergence**
 - **Telephone, pda, laptop**
- **VoIP**



Organisational IT Needs Analysis



Mean:
Helping me do what's
right



Mean

- **Roaming**
- **Visitors**
- **Compliance**
 - **Acceptable Users**
 - **Acceptable Use**
 - **Carrots and big sticks**
 - **Audit?**
- **Shibboleth**
- **Health & Safety**
- **Network Security**



Compliance Issues



Enabling Self-Service and Convenience: Portals and Single Sign-On



- **Remote access**
- **Remote access to content**
- **Acceptable users for shared research**



Enabling Study: Through the firewall



- **Skype**
- **Second Life**
- **Chatrooms**
- **Blogs**
- **Wikis – internationally**
- **Streaming, broadcasting and pods**
- **Working from home**



Enabling Resource and File Sharing: Collaborative/Grid Computing



Research

- **Research Data Preservation and Policy**
- **Shared research material**
- **High resolution of artefacts**
- **Simultaneous international working**
 - **The Virtual Conservatoire**



Digitising Libraries and Information Assets: Digital Asset Management

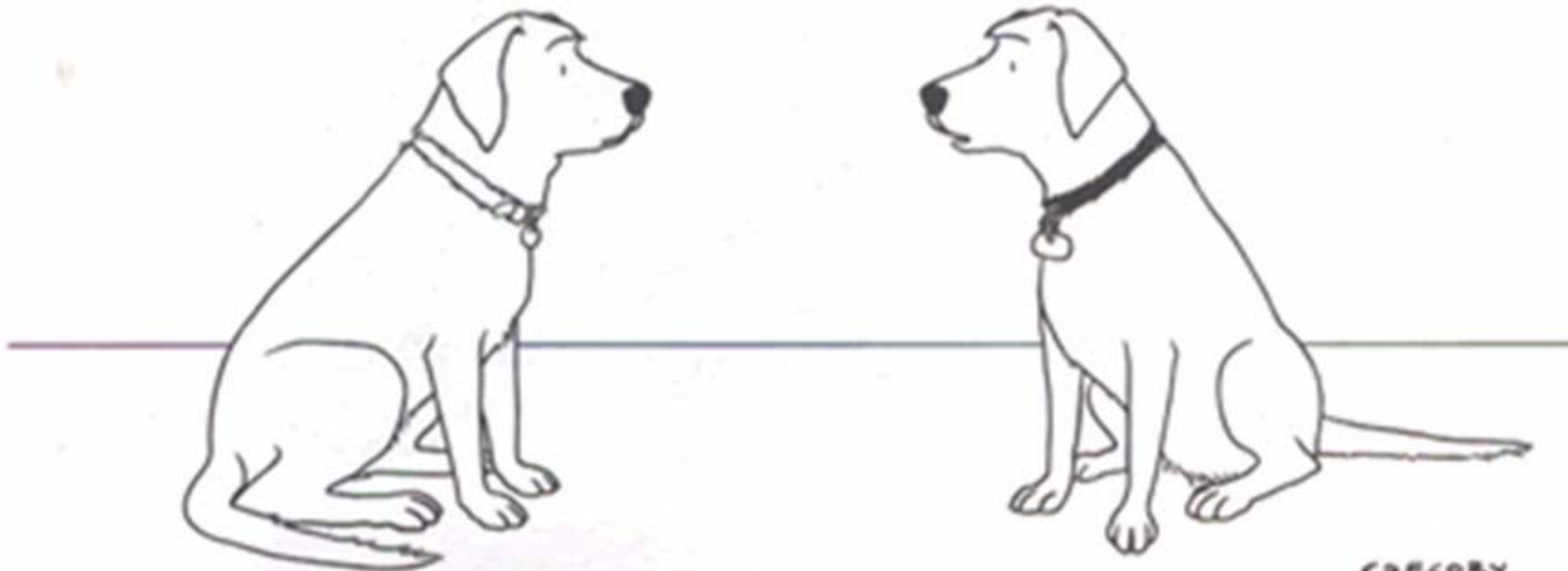


Digital Asset Management

- **Institutional Repositories**
 - Federated Searching
- **Data warehousing**
- **Web warehousing**
- **Research Data**
- **Large scale digitisation – Europeana**
- **IPR management**



Web 2.0: A Research Agenda



GREGORY

"I had my own blog for a while, but I decided to go back to just pointless, incessant barking."



Collaborative research

- **Blue Obelisk**
- **Open Wetware**
- **nanoHUB**
- **High resolution remote artefacts**
- **Pooled research**
- **Sermo**
- **Open Communities**
 - **Innocentive**
 - **Nature Precedings**





ZACK MORTAL HOSTED A class titled "Introduction to Library Research" yesterday at the new Second Life Library 2.0. The class covered the fundamentals of using real-life online library resources. Mortal covered how to use library catalogs, subject headings to improve searches; use research databases to locate articles and more. - COURTESY PHOTO.

Reading is virtually fundamental in SL

By **KATT KONGO**
Staff writer

While most Second Life residents are aware of the variety of ways in which SL is used, from educational classrooms to treatment of mental illnesses, most would be surprised to learn that SL is now being used by an institution most think of as conventional — a library.

To be more exact, the Alliance Library System (ALS) is currently providing select services to the residents of SL. Initial services have, so far, consisted of book discussions and programs, such as one held Friday on the topic of "Getting Along with IT staff for Librarians and Educators."

ALS, which is based in East Peoria, Ill., will team up with Online Programming for All Libraries (OPAL) and utilize the programs, currently offered online to librarians and libraries, within SL. The two entities eventually hope to offer a plethora of library services.

In a telephone interview, Kitty Pope, executive director for the ALS, said the goal of their programs within SL is to reach people who might not otherwise go to a library. In giving background information about the ALS, Pope said the organization

provides services to 286 libraries and is partially funded by the state of Illinois.

She added that ALS is one of the most innovative organizations, technologically speaking, and their philosophy is to mine new technologies to spread the gospel of library usage. "Innovation equals risk, innovation equals growth," she stated.

Lori Bell, the ALS's director of innovation, read about SL in the blog of a librarian who was already a resident. She created an account, logged on with her avatar, Lorelei Junot, and saw a population of almost 200,000.

She found that SL had a few libraries, such as Wandering Yaffle's *_blacklibrary*, but thought that library services could be expanded. "Since there is web programming through OPAL, why not offer that in SL?" she said.

Librarians from all over the country are gathering in SL to assist in setting up the virtual library. In fact, Pope expected criticism from many library blogs, but instead has found those in the field to be immensely excited about the possibilities afforded by SL.

Bell concurred, saying, "The response has been enthusiastic. People are volunteering and doing a

See BOOK, Page 20

Main Page



OpenWetWare is an effort to promote the sharing of information, know-how, and wisdom among researchers and groups who are working in biology & biological engineering. Learn more about us [here](#). If you would like edit access, would be interested in helping out, or want your lab website hosted on OpenWetWare, please [join us](#).

navigation

- [Main Page](#)
- [Community portal](#)
- [Recent changes](#)
- [Random page](#)

resources

- [Materials](#)
- [Protocols](#)
- [Help](#)

search

toolbox

- [What links here](#)
- [Related changes](#)
- [Upload file](#)
- [Special pages](#)
- [Printable version](#)
- [Permanent link](#)
- [Cite this article](#)



About Us

Learn more about us



Getting Started

Step-by-step tutorial



Resources

Useful links & tools



Community

How you can help



Labs

From around the world



Protocols

Share techniques & more



Courses

Host & view classes



Groups

Host & view organizations

News Highlights



Science Writers

Wanted



BioSysBio 2007

Conference



Video Highlight

Crisanti Lab



Lab Highlight

Christophides Lab

Media Spotlight



See video of Chris Surridge from [PLoS ONE](#) give OpenWetWare's Seminar Series on Open Science.

[Browse Archive](#)

What's New

- 3/9: Wiki Chat
You can now [chat](#) on the wikil
- 2/7: OpenWetWare data dumps
Download full backup of OpenWetWare.
- 1/18: Steering committee meeting
Call in or [add items to the agenda](#).
- 12/22: OpenWetWare welcomes its 2000th [contributor](#)!
- 12/17: OpenWetWare mailing lists
[Join one](#) or [send email](#).

[Browse Archive](#)



This page was last modified 19:26, 14 September 2006.
times.

Content is available under [GNU FDL](#) or [Creative Commons BY-SA](#).
OpenWetWare [Disclaimers](#)

This page has been accessed 178,327

[Privacy policy](#) [About](#)



And Green
Responding to
sustainability



Green issues

- **Appropriate levels of technology**
- **Eliminate duplication and its costs**
- **Reduce estate footprint**
- **Work from home**



Great Expectations

The future is already here, it's just not evenly distributed yet.



DO YOU MIND IF I
SPOUT OBVIOUS
GENERALITIES ABOUT
INFORMATION?



IF YOU HAVE TOO MUCH
INFORMATION, AND IT'S
NOT ORGANIZED IN ANY
USEFUL WAY, THEN IT
CAN'T HELP YOU MAKE
DECISIONS.



ARE
YOU A
CONSUL-
TANT OR
MILDLY
RETARDED?



I WISH
I KNEW.

© Scott Adams, Inc./Dist. by UFS, Inc.

www.dilbert.com scottadams@aol.com

8-7-04 © 2006 Scott Adams, Inc./Dist. by UFS, Inc.



THE
UNIVERSITY OF
STRATHCLYDE
IN GLASGOW