

JANET Roaming

David Richardson

13th April 2011



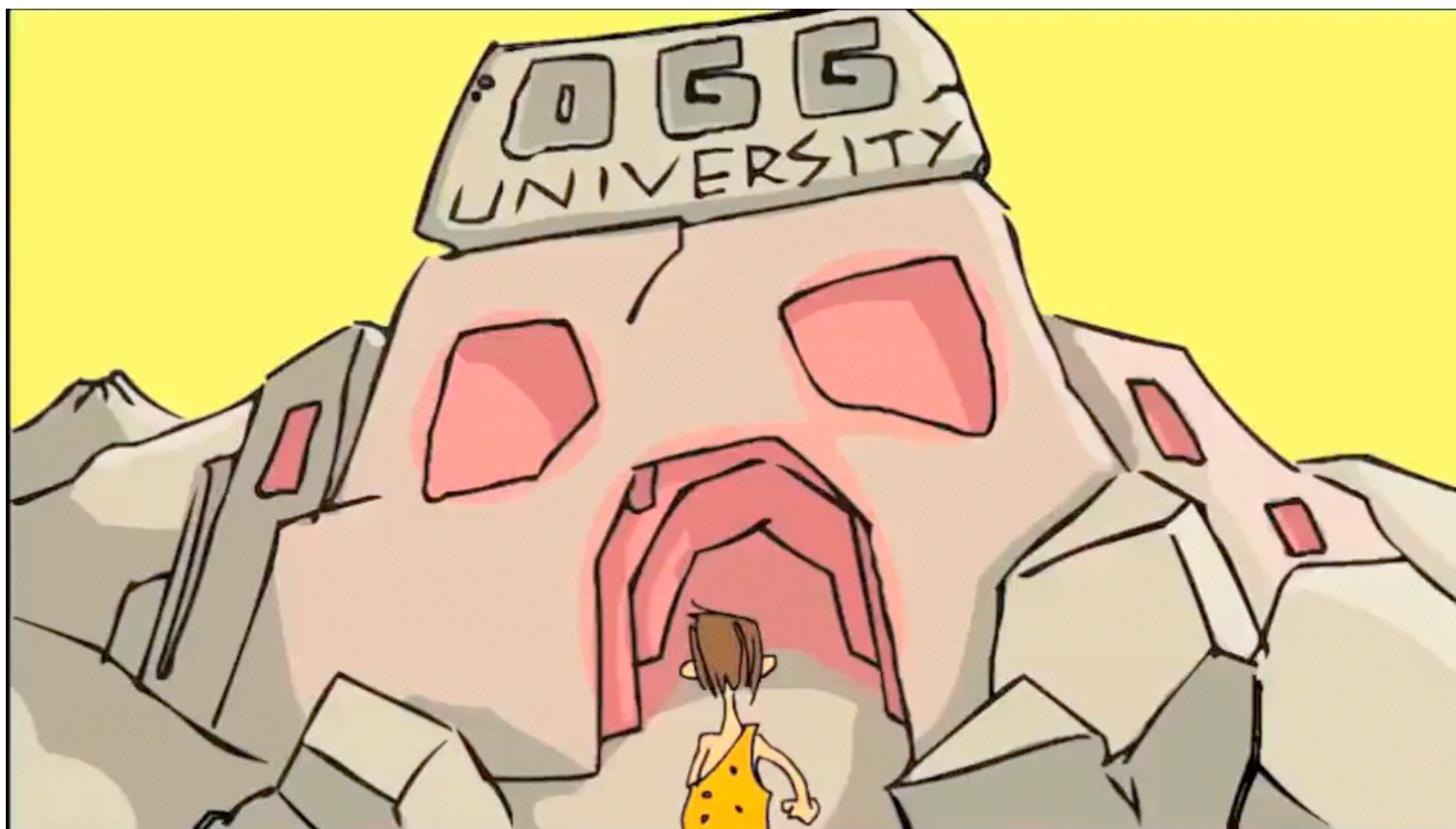
what is eduroam?

eduroam is sufficiently advanced that to me it's
indistinguishable from magic.

2:41 PM Apr 8th via TweetDeck

twitter.com/bengoldacre

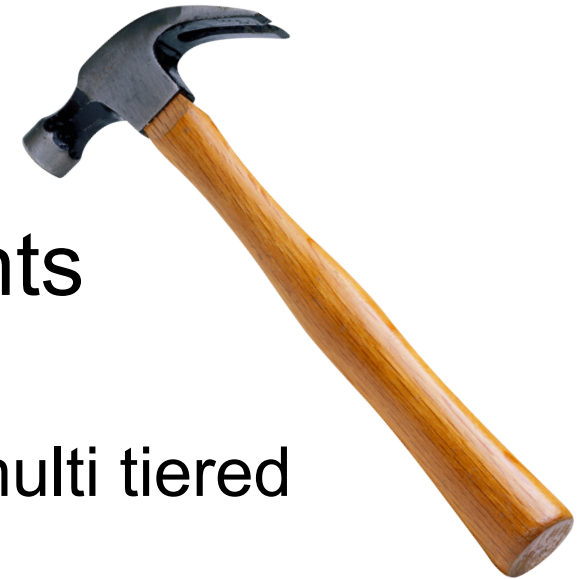
eduroam...



JANET Roaming Service Updates

- Service developments
- Twitter
- Usage stats





Service Developments

- JRS tech spec currently specifies a multi tiered system
 - flattening this in the next few months
- Forthcoming Tech Spec update highlights:
 - removing requirement for WPA
 - encouraging use of WPA2
 - removal of WPA/TKIP from tech spec
 - Operator-Name attribute insertion

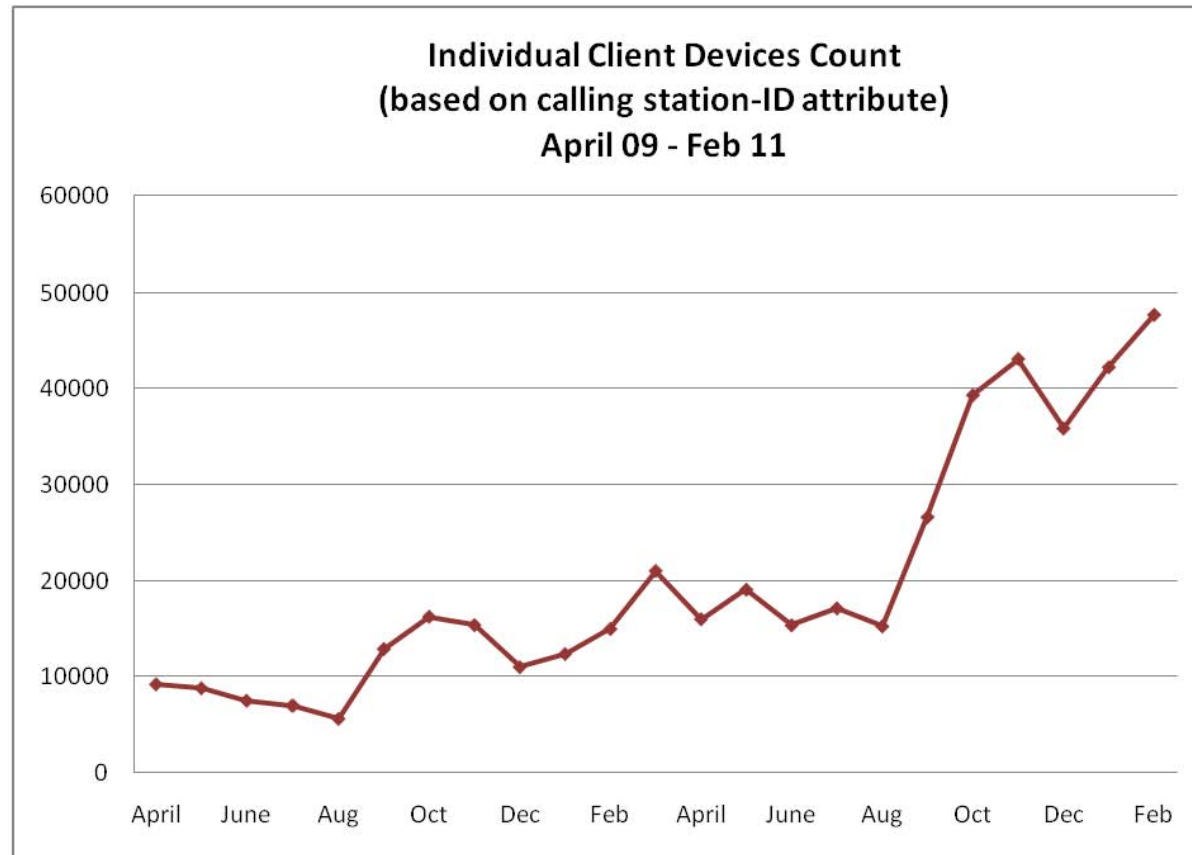


twitter.com/eduroamUK

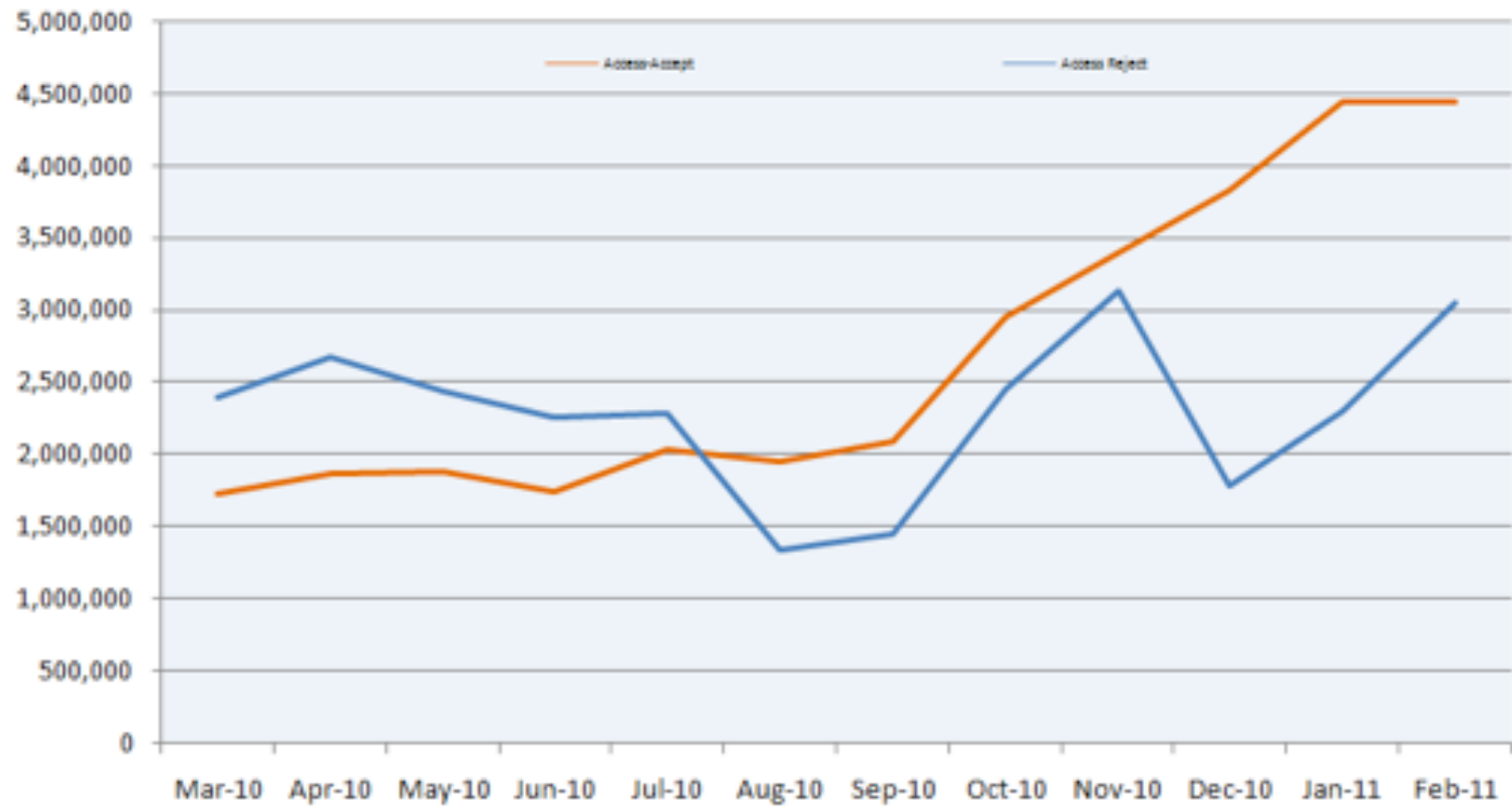
- Service update announcements
- New UK sites joining eduroam
- Training courses

- www.ja.net/roaming
- jrs@ja.net

Unique devices connecting to JRS



eduroam in the UK

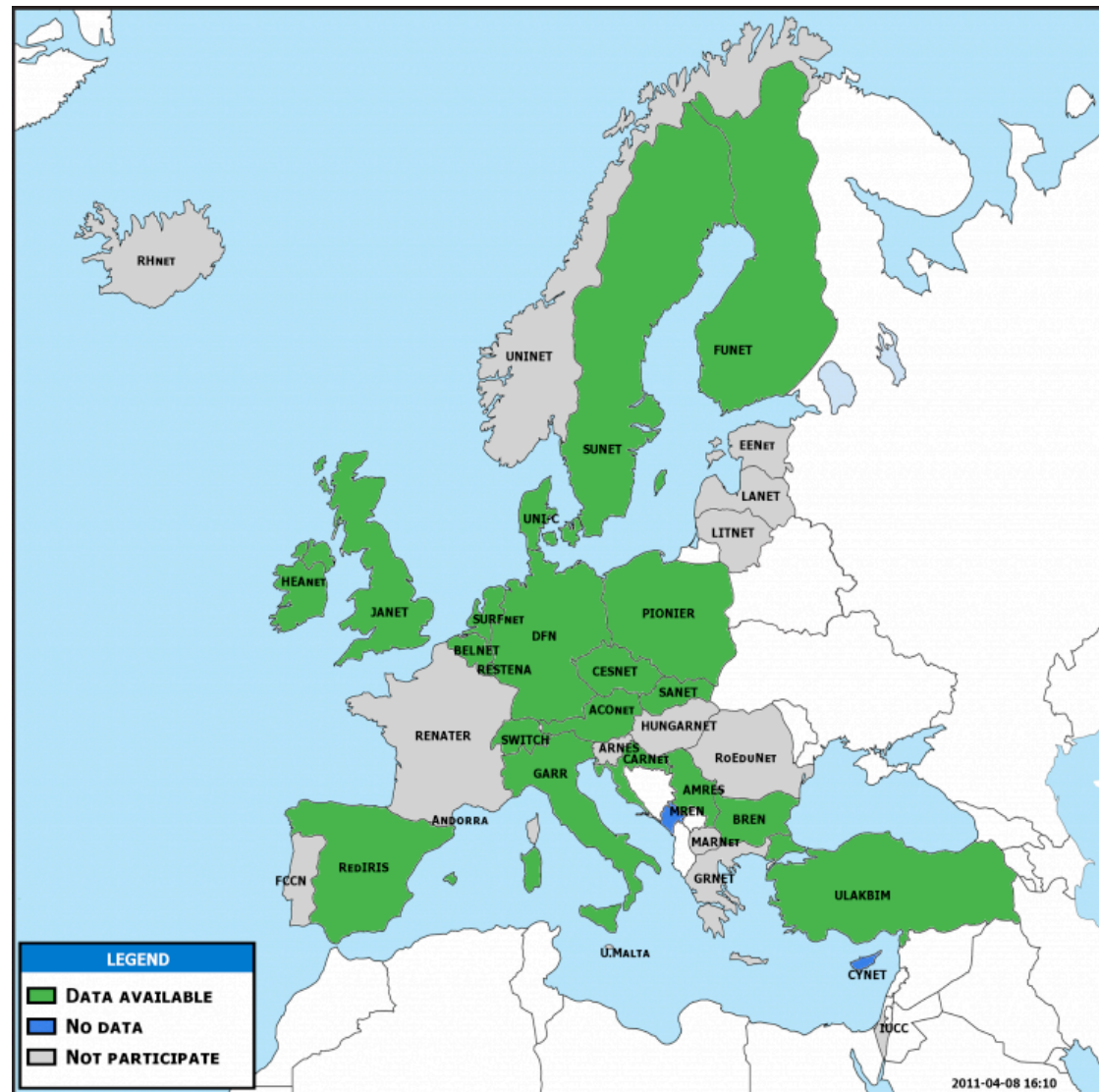


f-ticks international roaming stats

<http://monitor.eduroam.org/f-ticks/>

Developed by Stefan Winter of RESTENA

for the TF-Mobility and Network Middleware working group

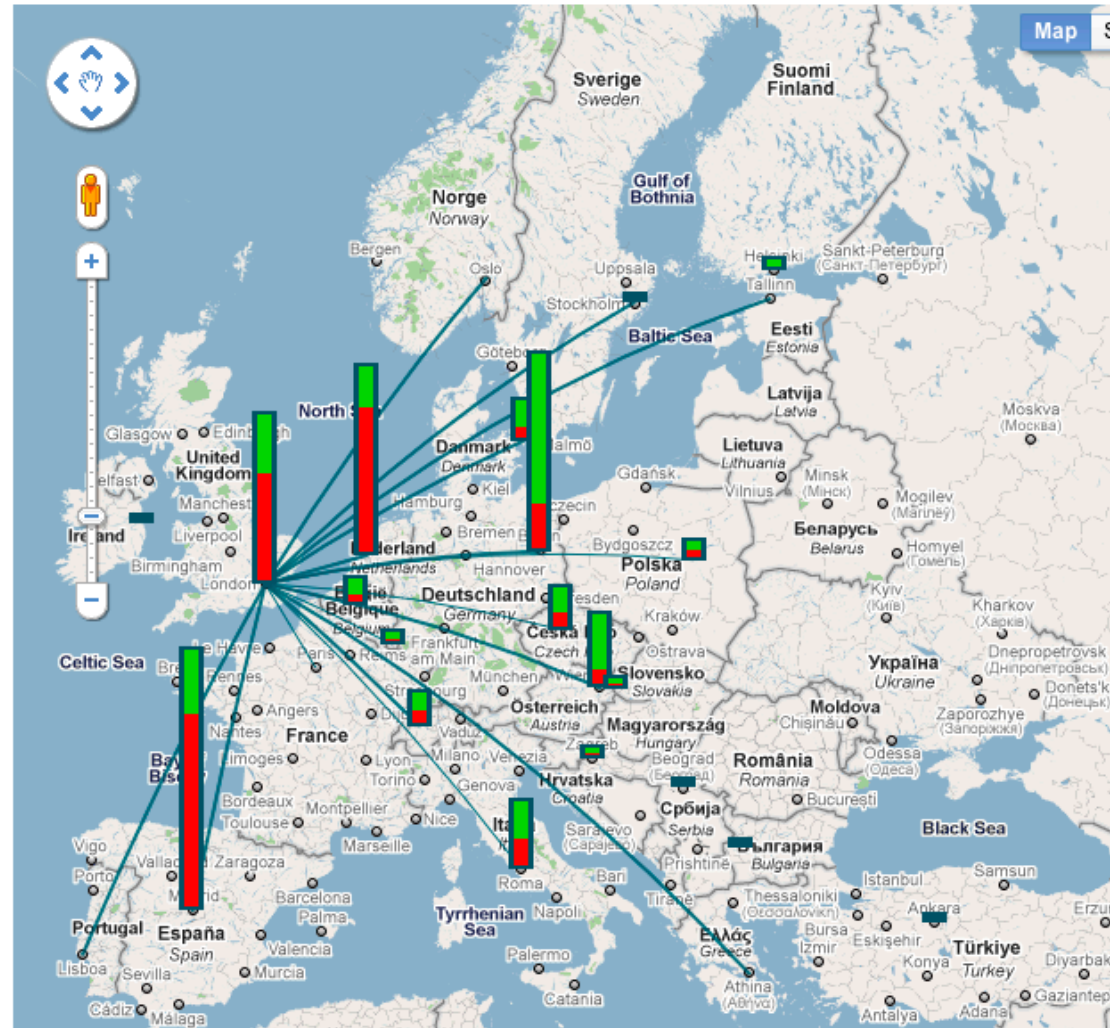


Communication map for all country from 2011-04-11 15:00:00 to 2011-04-11 15:00:00 using all responses

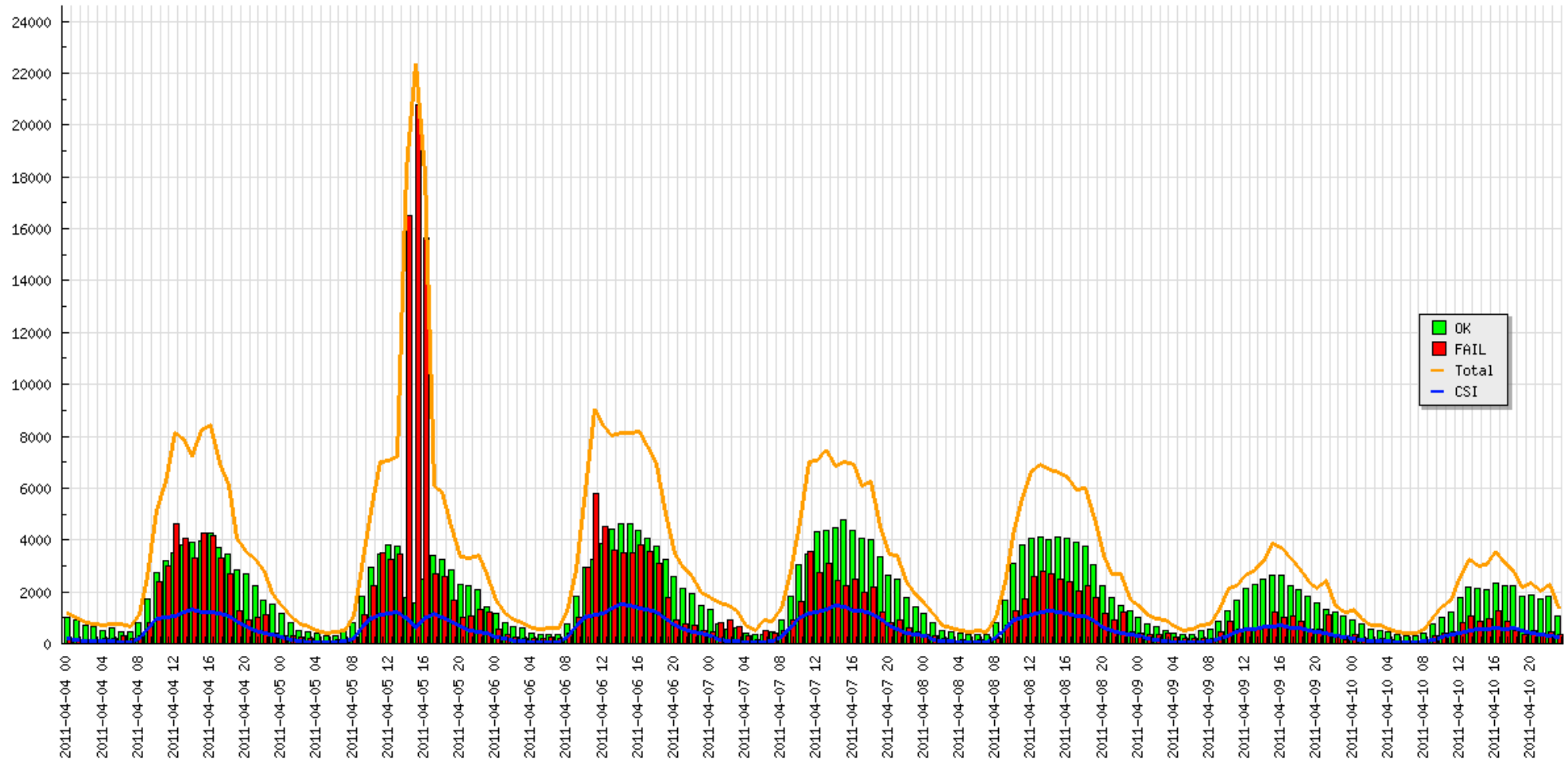
f-ticks

- Real-time display of international roaming events
- shows access-accept and access-reject
- clicking on any of the countries shows where people are roaming to/from

Display map using accept or reject responses.



Accumulated requests statistic for country uk from 2011-04-04 00:00:00 to 2011-04-10 23:59:59



JRS Futures



JRS futures

- expanding JRS reach from fixed location Wi-Fi
- JANET 3G!
- new services being added to the JANET Portfolio
 - JRS on public transport
 - eduroam meeting support kit
 - eduroam for museums and cultural venues..
 - fully managed eduroam (IDP and visited)
 - investigating NHS & Local Government

eduroam Service Monitoring

- Current monitoring
 - based on anonymised syslog data
- Future monitoring
 - ‘User Experience’ monitoring
 - Using IF-MAP to monitor RADSec



eduroam... on busses



eduroam meeting support

- uses JANET hosted RADIUS server
- IPSec VPN
- Clients tunnel back and receive a public IPv4 address from a central pool serving this project



Questions?

- david.richardson@ja.net
- twitter.com/davidrichardson

