



*Experiments into Biology-
Technology Interaction*

Kevin Warwick

University of Reading, UK

13 April 2011

A wide-angle photograph of a calm, deep blue ocean stretching to the horizon. The sky is a clear, vibrant blue with wispy white clouds. A bright, shimmering reflection of the sun is visible on the left side of the water's surface, creating a vertical band of light. The overall scene is serene and expansive.

RFID Identity







Sensory Substitution





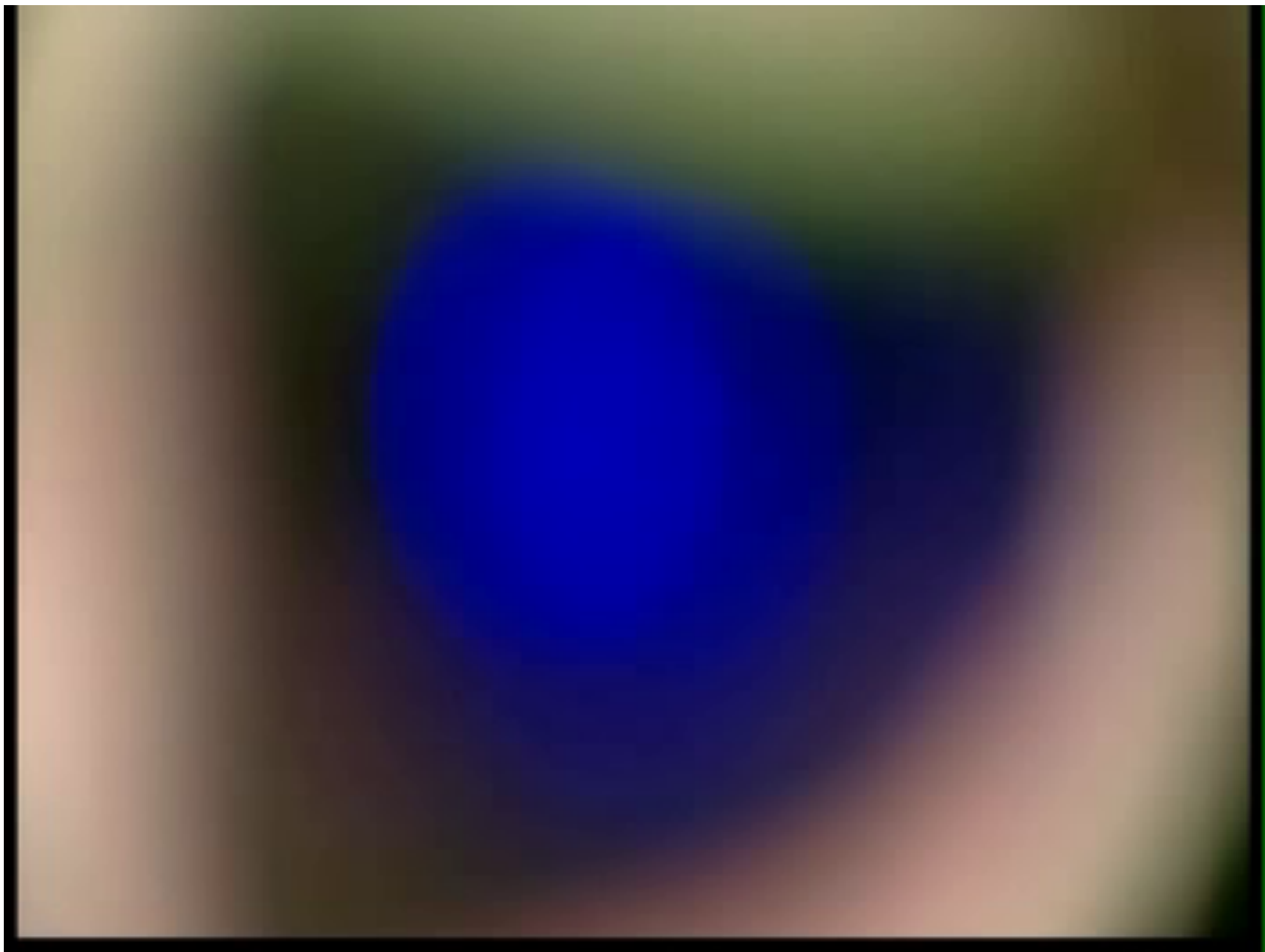
DEC 5010
585
OSMAN





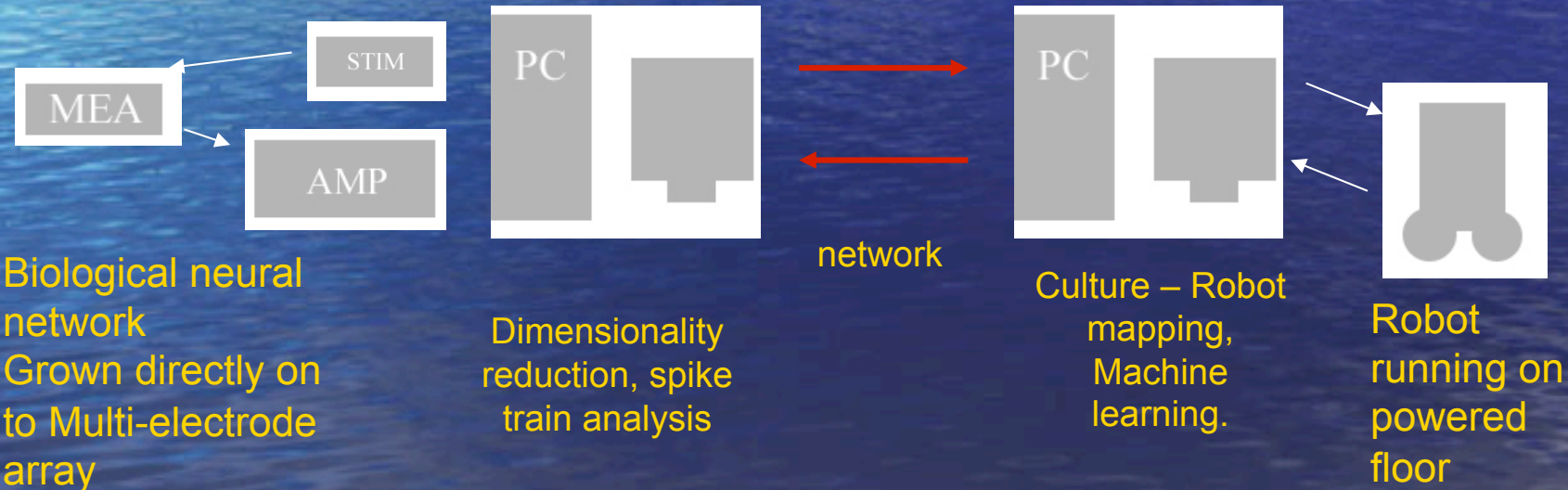


Network to link Brain & Body



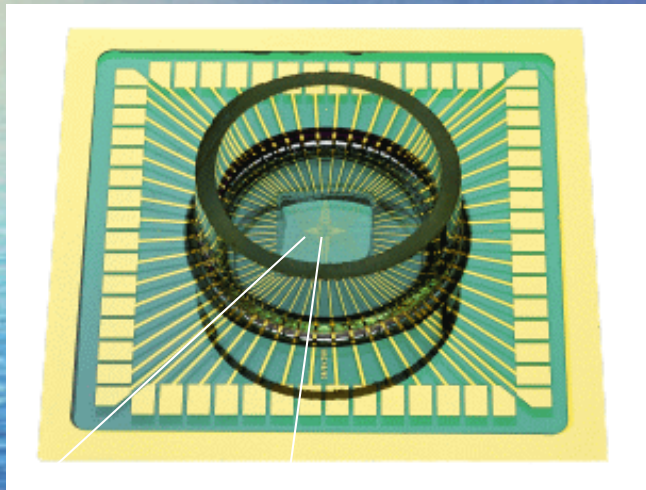
Robot with a Biological Brain

A closed loop interface between a biological network and a robot

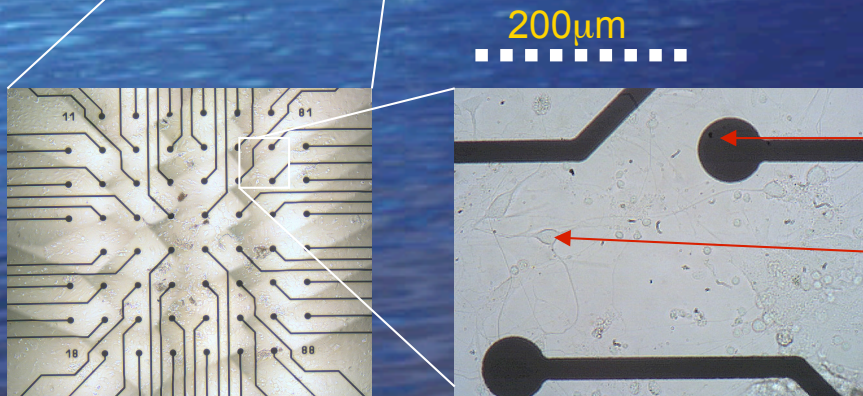


Approach

- Culture brain cells directly on to a recording surface and re-embodiment the 'brain' within a robotic body.

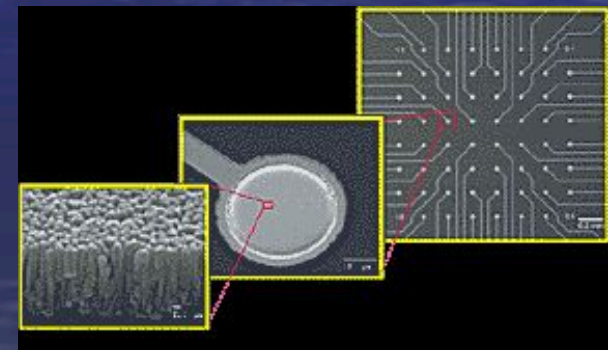


- Multi-Electrode Array (MEA) allows recording from 128 electrodes across the entire culture.



TiN Electrodes
30µm diameter

Neurone



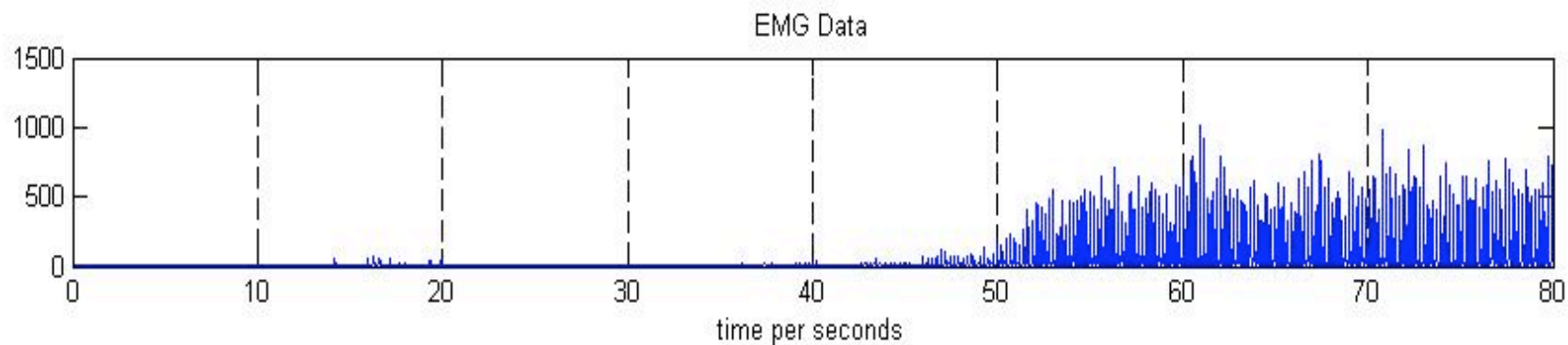
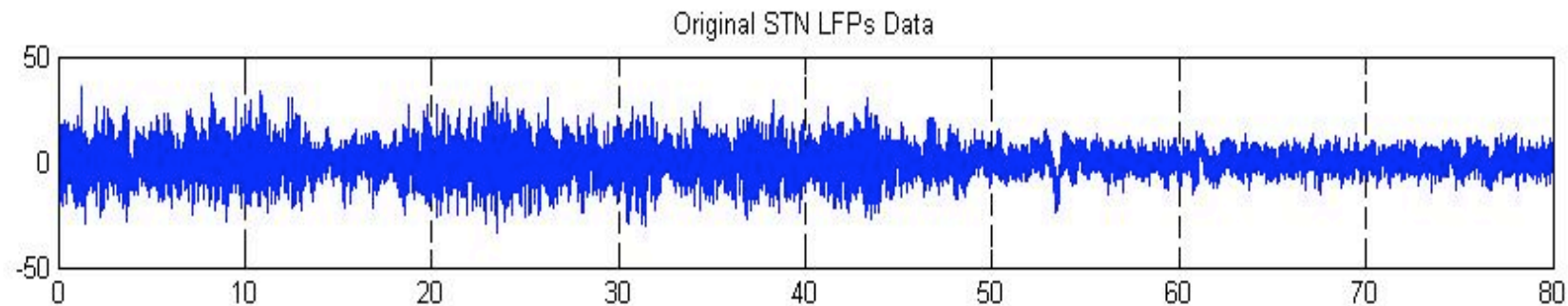
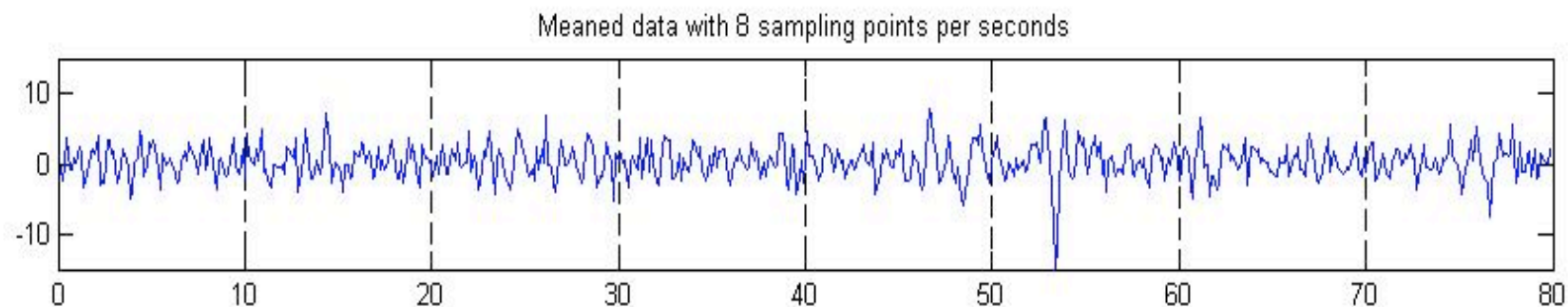
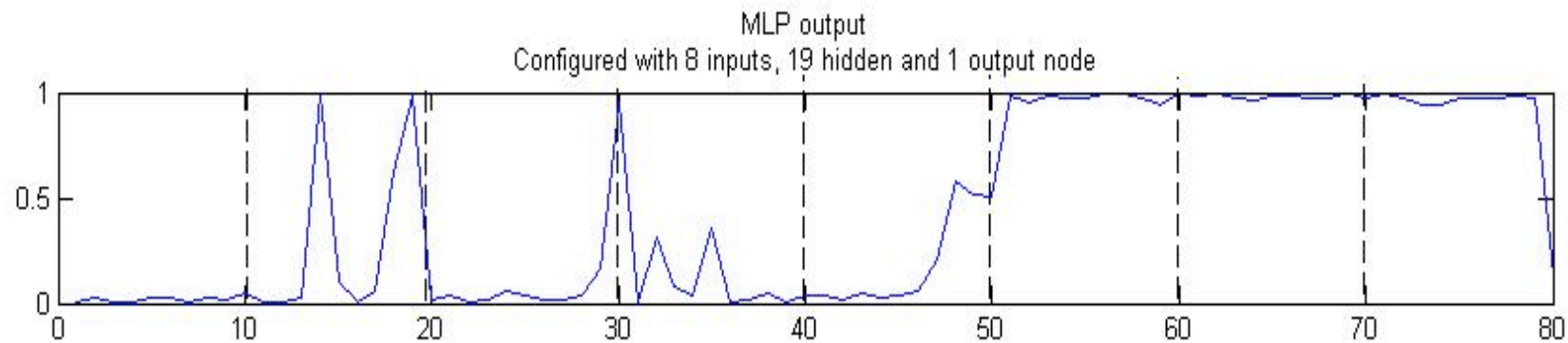






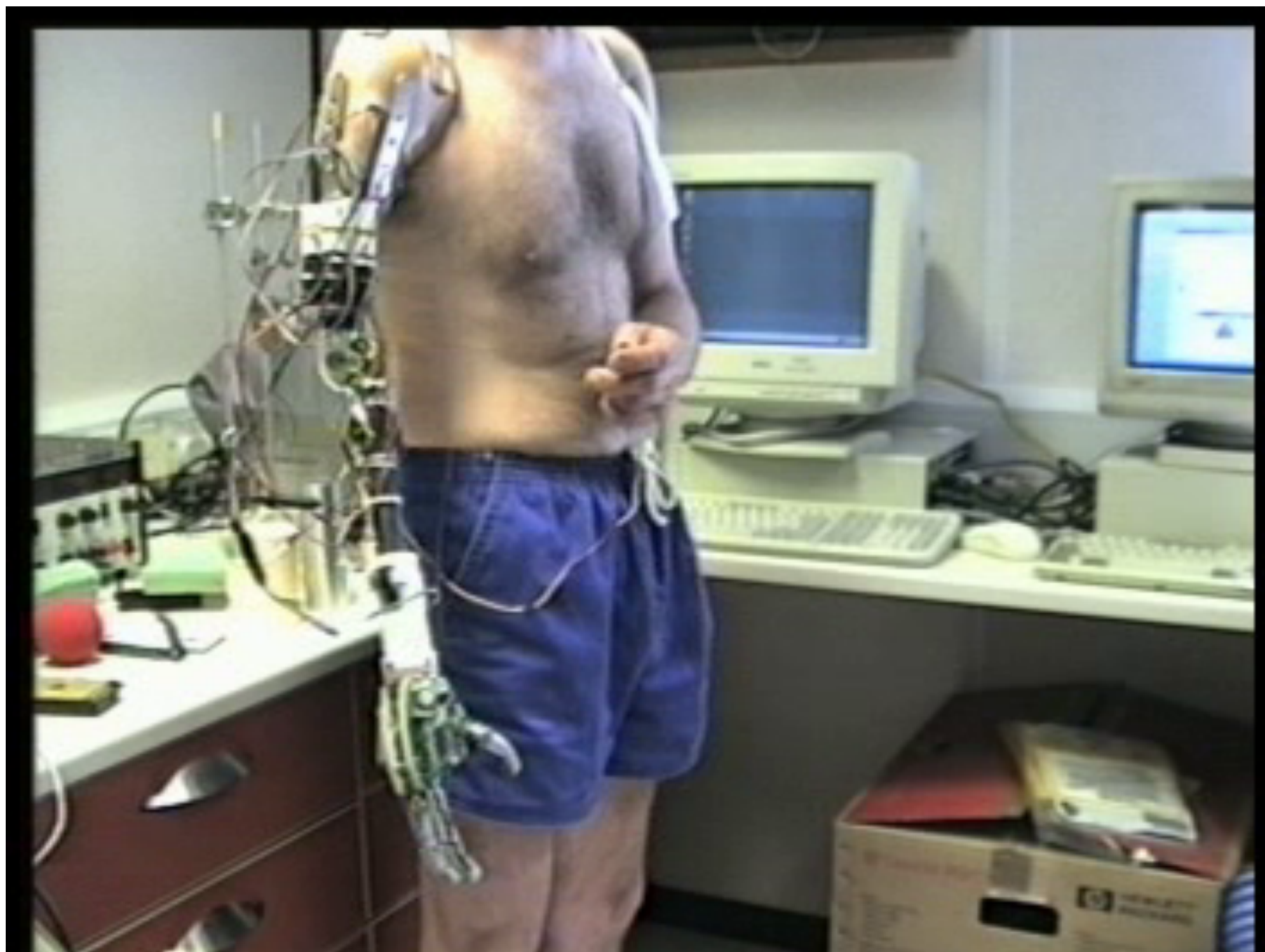
Changing Behaviours





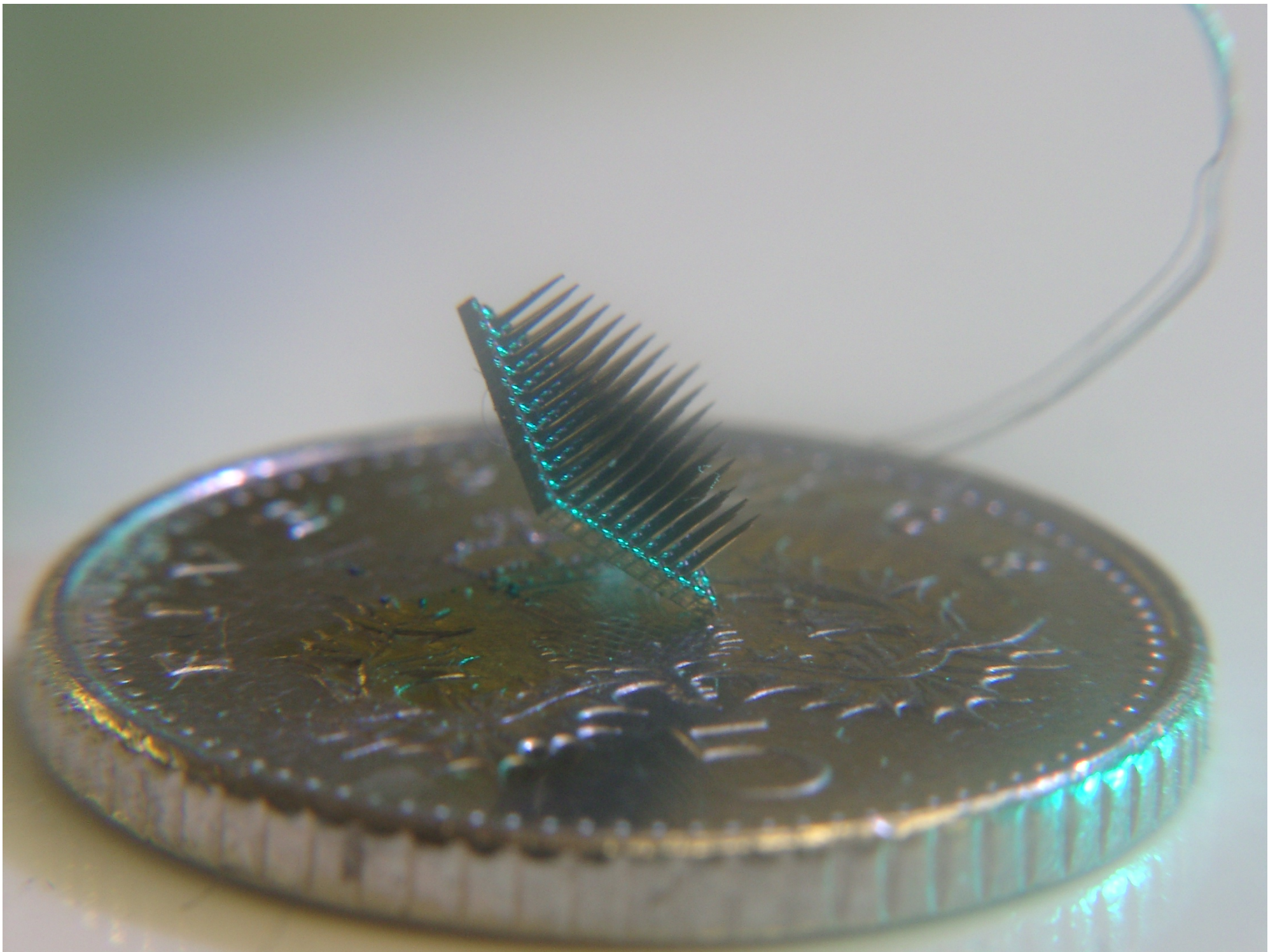


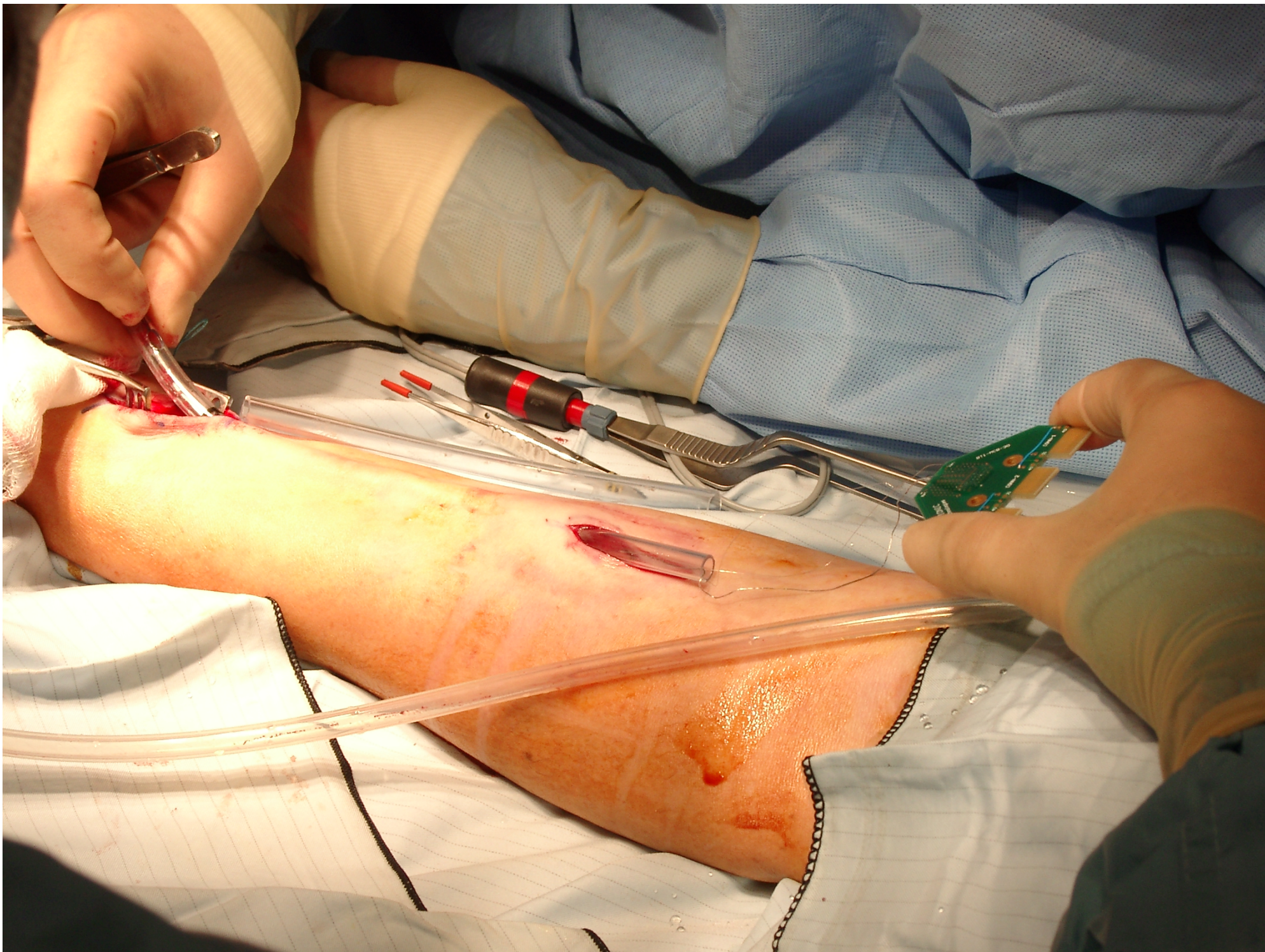
Neural Implants Therapy/Enhancement

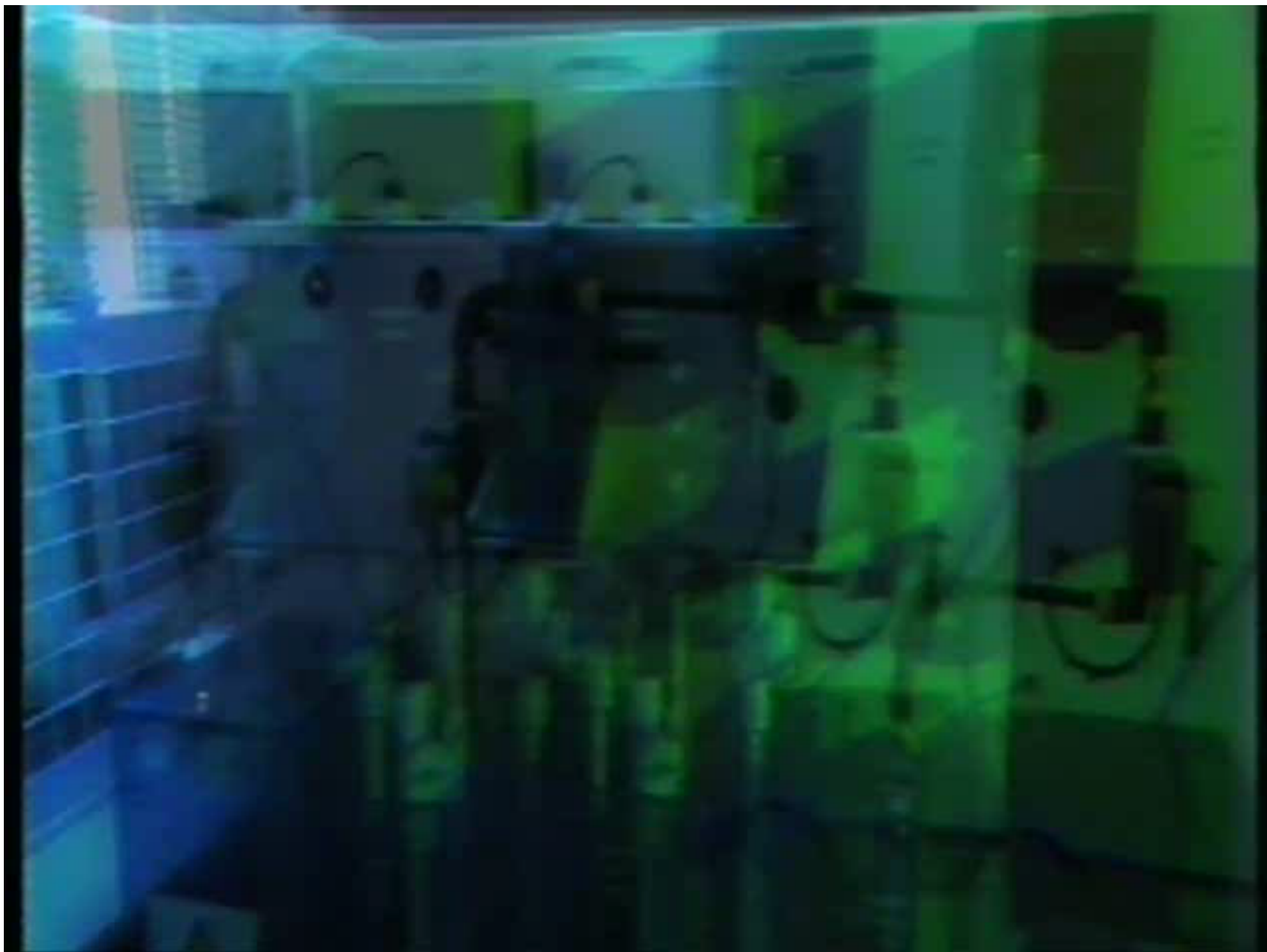










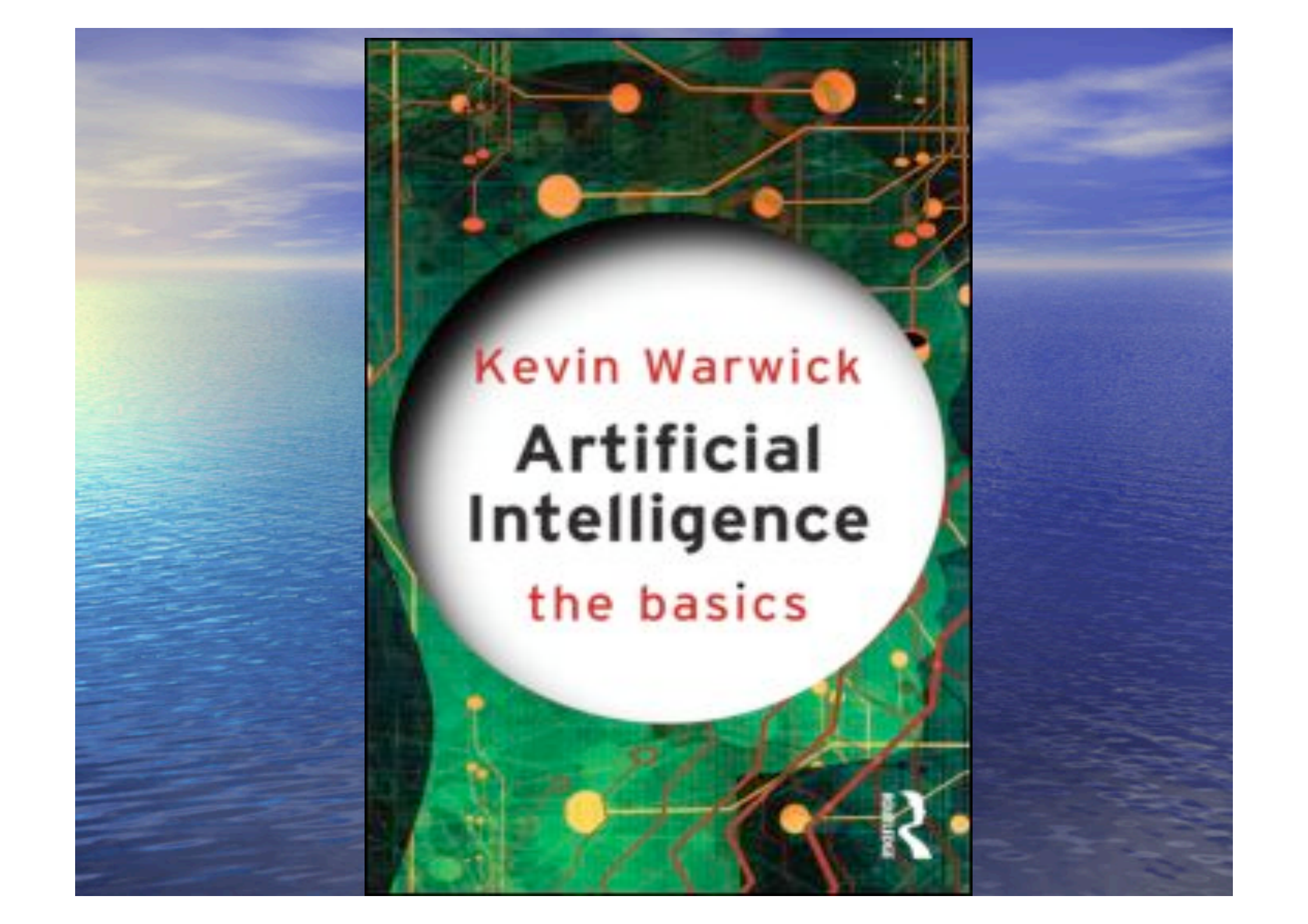












Kevin Warwick

**Artificial
Intelligence**

the basics

addison
w

www.kevinwarwick.com

Youtube 'rat brain robot' .. 'cyborg'

wikipedia .. Kevin Warwick

k.warwick@reading.ac.uk